

# PORTFOLIO



LIGHT. COLOUR. DRAMA. FRAMED.

2024/2025

BY ANNE MANKE PHOTOGRAPHY

Anne Manke. Visual storyteller. Colour seeker. Contrast lover.



## 4 WELCOME ABOUT ME

A visual storyteller shaped by contrast, culture, and curiosity. A brief insight into Anne Manke's creative roots, global journey, and the visual language she has developed between Berlin, Tokyo, Sydney, and Küssnacht.

## 5 HIGHLIGHTS COLOR THEORY

Colour as oxygen - how visual energy shapes every frame. A personal exploration of Anne's approach to color as a defining creative force.

## 9 HIGHLIGHTS SPORTS FASHION

Movement is more than a moment - it's a rhythm, a form, a feeling. This series captures the power of athletic energy translated into bold fashion narratives. Anne Manke freezes motion into frame, turning speed, strength, and structure into a refined visual language.

## 13 HIGHLIGHTS STORY TELLING

Every image tells a story - but the right sequence turns it into a narrative. In this piece, Anne Manke showcases her editorial approach to photography: how emotion, context, and contrast come together to shape visual storytelling.

5

COLORS THEORY  
"Colors are my oxygen - I can't live without it."



9

SPORTS FASHION  
A new love - here to stay.



13

VISUAL STORY TELLING  
Every frame a story.



“Photography is not just about what I see,  
it’s about what I feel, and how I translate that into image.”



# THIS IS ME

---

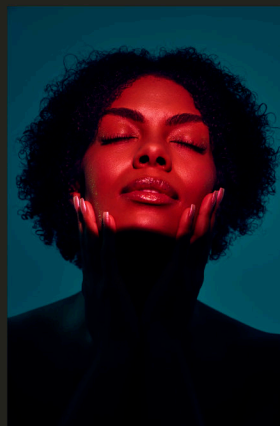
## ABOUT

Anne Manke is a freelance photographer known for her bold, expressive approach to portrait, fashion, and editorial photography. Her work is defined by strong contrasts, clean compositions, and a deep, intentional use of color. Working primarily with her Canon R5 and the Profoto Flash System, she brings sharpness and depth to every frame - capturing both detail and [e]motion.

Anne's aesthetic centers on strength, character, and visual impact. Her portraits are unapologetically direct, often celebrating unconventional beauty and raw presence. She seeks out individuality and authenticity, aiming to create images that resonate not just visually, but emotionally.

Color is a core element of Anne's visual language. She uses it with purpose - as a way to evoke feeling, disrupt expectations, or elevate the ordinary. Rich, saturated tones and striking palettes are hallmarks of her work, giving each image a distinctive energy and mood.

Whether shooting a conceptual fashion editorial or a single intimate portrait, Anne approaches each project with the same commitment: to create honest, visually powerful photography that tells a story and leaves a lasting impression.



HIGHLIGHTS

# COLOR THEORY

Colour as Emotion – The Oxygen of Anne Manke’s Visual Language

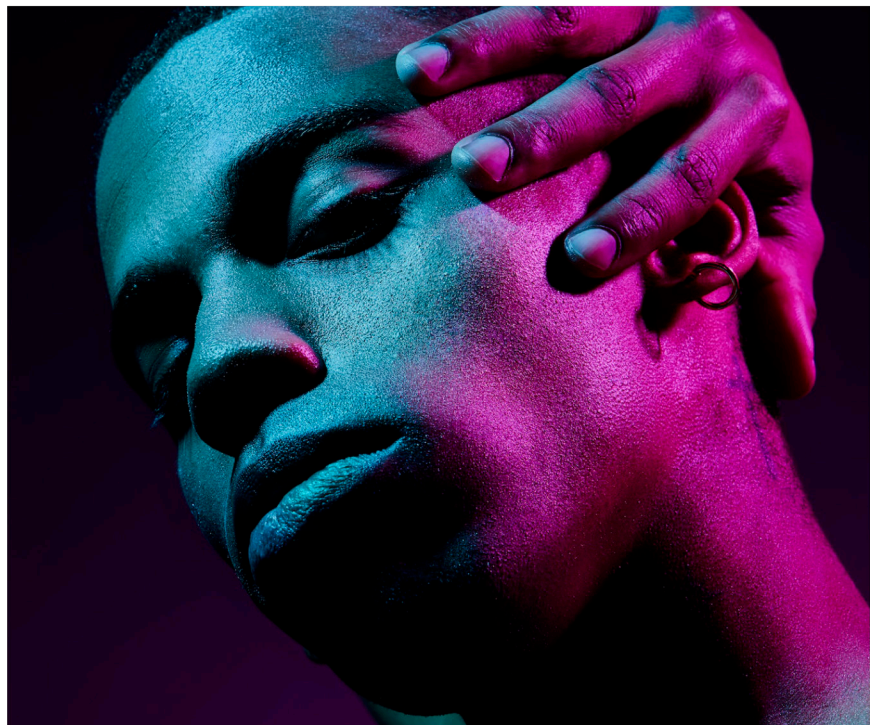


## LANGUAGE OF COLOR

For Anne, color is more than aesthetic - it's emotional architecture. In her work, color defines the energy of an image before form, subject, or setting even come into focus. Whether bold or restrained, her use of color sets the tone, guides the mood, and anchors the visual narrative.

She approaches color like some approach light, as a tool to reveal contrast, stir emotion, and create tension. Her palettes are intuitive yet precise, always in service of the story. Every hue carries intention: to amplify, soften, disrupt, or still a moment in time.

In Anne's photography, color is never ornamental. It leads, it speaks, it moves. It is the oxygen that breathes life into her frames - and without it, the story would remain untold.





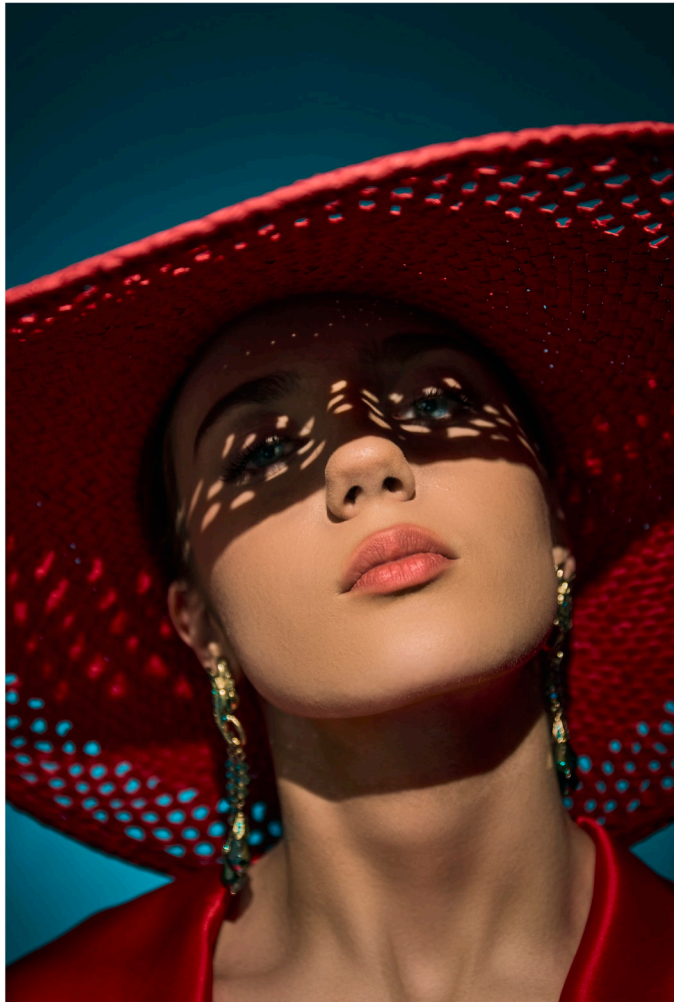
## RED PHASE

---

In Anne Manke's visual world, red is more than a color. It's a presence. It cuts through softness, disrupts silence, and injects emotion with precision. Whether used as a bold accent or the driving force of a frame, red carries weight in her storytelling. It can be power, danger, passion, or restraint but it is never neutral.

## COLOR POP

Anne uses complementary colors not just for balance, but for emotional tension. With a deep understanding of color theory, she plays with opposites to create energy, contrast, and story. Knowing the rules gives her the freedom to bend them and turn color into a conversation.



## MOVEMENT FROZEN IN TIME

---

Anne Manke's Sports Fashion work focuses on freezing movement. She takes dynamic, athletic subjects and captures them in calm, static compositions. The result is a contrast between expected motion and controlled stillness - turning energy into form.



HIGHLIGHTS  
**SPORTS FASHION**

A Still Life of Movement







## MOTION CAPTURED

Anne Manke uses angles, forms, and leading lines to guide the viewer into the image. Her compositions create visual structure that connects movement, subject, and space with intention.



# HIGHLIGHTS

## STORY TELLING



## BROKEN DOLLS

---

In her fine-art series "Broken Dolls", Anne Manke explores the aesthetic of imperfection. Elegance is cracked, and emotion lives in the fault lines. The series tells a story of fragile identity and fractured beauty, captured through a visual language that is both delicate and deliberate. The project began in close collaboration with Make-Up-Artist Selina Wipfli, who shaped the concept with

distinct make-ups for each doll. Her make-up-designs gave the characters depth and direction, while Anne translated these visual ideas into layered, atmospheric compositions. Alongside them, designer Hendrik Vermeulen brought in his unique design perspective, blending fashion and concept to create visual tension and poetic contrast within the images.

"The Mannequin"  
Model: Jennifer Turi  
MUA: Selina Wipfli  
Designer: Hendrik Vermeulen





The models were essential co-creators in this narrative. Their presence, poses, and expressions reflect a tension between strength and vulnerability, embodying the idea of "brokenness" not as weakness, but as a powerful aesthetic choice.



In Broken Dolls, Anne Manke crafts a series that balances precision and emotion. Each frame becomes a still moment of introspection - a visual dialogue about identity, decay, resilience, and the quiet power of imperfection.

"The Porcelain Doll"  
Model: Kaiwen Hu  
MUA: Selina Wipfli  
Designer: Hendrik Vermeulen

"The Baroque Dolls"  
Model: Noelia Genco, Mariella Genco  
MUA: Selina Wipfli  
Designer: Hendrik Vermeulen





"The Broken Dolls"  
Model: Rahel Baer  
MUA: Selina Wipfli  
Designer: Hendrik Vermeulen



## THROUGH THE LENS OF CURIOSITY

---

### Contact

hello@annemanke.com  
+41 79 555 07 33

To the editor, art director, or curious reader who's holding this book ,

Thank you for taking the time to see my work, and perhaps even feel something in it. This look-book isn't just a portfolio. For me, it's a visual diary of how I work, think, and see. Every image is built on instinct, emotion, and a deep interest in contrast , whether in color, concept, or character.

I'm drawn to moments of tension: stillness within motion, elegance within disruption, stories that exist just beneath the surface. That's what I try to capture in every frame.

If something here resonates with you then it's already done what I hoped it would.

Warmly,  
*Anna* ✨